



NATIONAL REPORT TO BALTIC SEA HYDROGRAPHIC COMMISSION

2025

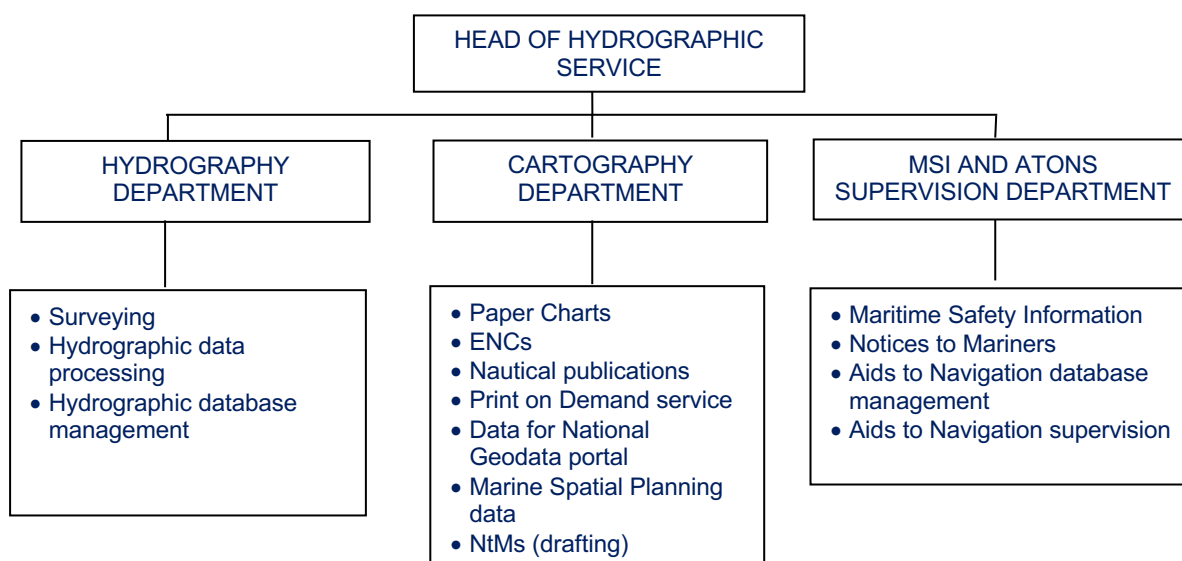


LATVIJAS JŪRAS ADMINISTRĀCIJA
MARITIME ADMINISTRATION OF LATVIA

THE REPORT GIVES AN OVERVIEW OF
THE MAIN ACTIVITIES OF HYDROGRAPHIC
SERVICE OF MARITIME ADMINISTRATION OF
LATVIA IN PERIOD OF 2024-2025.

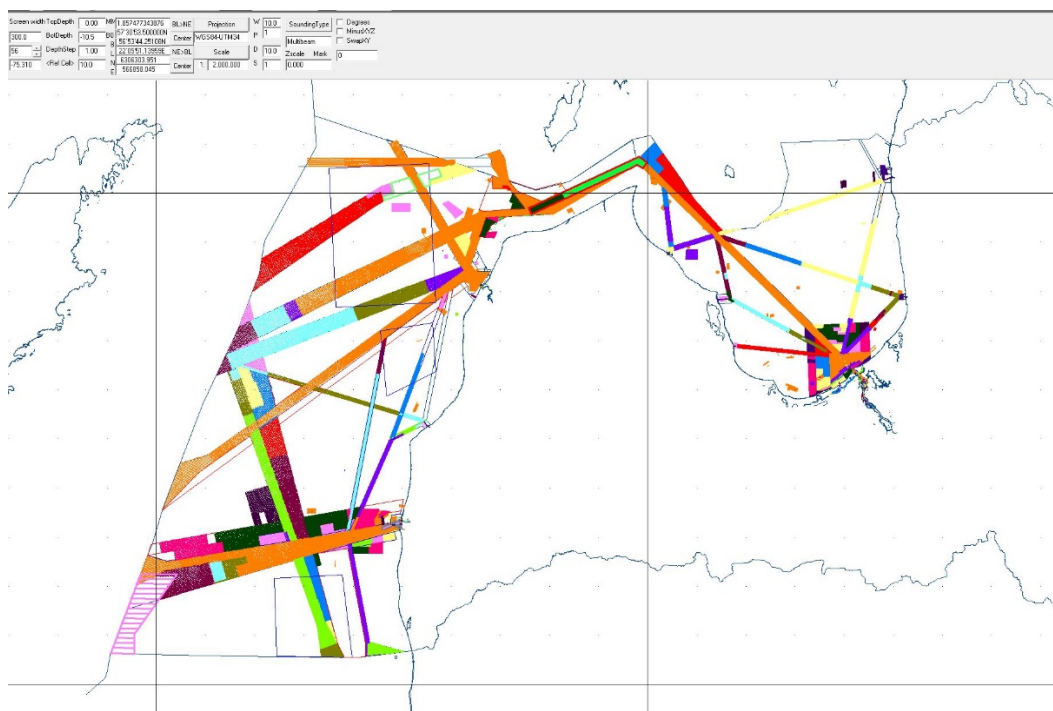
1. HYDROGRAPHIC SERVICE

Hydrographic Service (HS) is one of the Departments of the Maritime Administration of Latvia (MAL). MAL is a civil organisation - MAL is a state limited liability company supervised by the Ministry of Transport that fulfils functions according to the Law on Maritime Administration and Maritime Safety. HS organisational structure and main functions:



Coverage of hydrographic surveys in 2025 (until July)

1.0 km²- Harbour areas



SURVEY VESSELS

Hydrographic vessels owned by MAL:

- Kristiāns Dāls - 19 m catamaran type survey vessel;
- Sonārs - 7.25 m single-hull survey boat for port and coastal areas survey;
- Blesser 505 - 5.5 m single-hull survey-boat on rivers, port and shallow coastal areas;
- Blue Robotics BlueBoat- 1.2m USV(Uncrewed surface vessel) for shallow coastal areas.

3

3. NEW CHARTS & UPDATES

Paper Charts

Latvian waters are fully covered with the charts of relevant navigational scale. MAL produces 25 paper charts, including 19 INT charts.

All paper charts are updated by Notices to Mariners and available in Print on Demand (POD) system.

Status of the nautical charts within the limits of the Latvian EEZ:

Navigational Purpose/Scale	A Charts complying to IHO standard S-4 (Coverage %)	B Raster navigational charts complying IHO standard S-61 (Coverage %)	C ENCs (Coverage %)
Offshore passage/Small	100	-	100
Landfall and Coastal passage/Medium	100	0	100
Approaches and Ports/Large	100	0	100
Percentage of Group A showing depths in metres	100		
Percentage of Group A referenced to a satellite datum	100		

See Annex 2 for detailed information on Chart and ENC coverage.

INT charts

New charts and new editions:

2024 (September – December): 3 new editions.

2025 (January – August): 3 new editions.

National charts

New charts and new editions (National paper charts are produced in accordance with IHO S-4 standard):

2024 (September – December): 1 new edition.

2025 (January – August): 0.

ENC

Latvia produces 29 ENCs in usage bands 1 to 6.

New editions and new ENCs:

2024 (September – December): 4 new editions.

2025 (January - August): 3 new ENCs, 6 new editions.

Usage 1 (Overview)	1
Usage 2 (General)	4
Usage 3 (Coastal)	9
Usage 4 (Approach)	5
Usage 5 (Harbour)	4

Usage 6 (Berthing)	7
--------------------	---

ENCs are regularly updated. Temporary (T) and preliminary (P) notices to mariners are included.

ENC distribution

MAL has agreement with PRIMAR and distributing ENCs directly to customers with agreements with MAL.

RNCs

RNCs are not produced by MAL.

Other charts

-

4. NEW PUBLICATIONS & UPDATES

8th Edition of *List of Lights in Latvian Waters* was published in January 2025. New edition of *Leisure Craft Charts* is in compilation (planned to be published in 2026).

5. MSI

Existing infrastructure for transmission.

National GMDSS VHF network along coastline for broadcasting of local Navigational Warnings. Service is provided by the Maritime Rescue Coordination Centre of the Latvian Naval Forces Coast Guard Service (MRCC Riga) twice per day in English and Latvian. Urgent Navigational Warnings are transmitted immediately on receiving them and then included in next MSI broadcast.

NAVAREA I Baltic Sea Sub-Area Co-ordinator - Sweden is providing NAVTEX Service over Latvian waters. Navigational Warnings and other messages for Latvian waters are transmitted by Swedish and/or Estonian transmitters. Received NAVTEX messages are available on web at: www.navtex.lv.

Notices to Mariners are published monthly. Each year's first edition of NtM is Shipping Regulations, which contains updated information regarding ports, reporting requirements, areas prohibited and area restricted for navigation, MSI.

New infrastructure in accordance with GMDSS Master Plan.

Nothing to report.

6. C-55

Regular updates are provided.

7. CAPACITY BUILDING

MAL is participating in Baltic Sea e-Nav project – testing S-100 product creation.

Cartographers completed Teledyne Caris training for S-101 Production.

8. OCEANOGRAPHIC ACTIVITIES

None

9. OTHER ACTIVITIES

INSPIRE directive

According to INSPIRE directive, MAL takes part in the geospatial data sharing through the Geoportal of Latvia, which is the hub to the INSPIRE Geoportal. MAL HS has already provided both - metadata and geospatial data sets to relevant authorities.

National Spatial Planning

The Government of Latvia approved the National MSP on 14.05.2019.

IHO Working Groups

MAL is participating in NCWG, BSICCWG, S-101 PT, BSMSIWG, CDWCWG, Re-survey MWG, HSWG, BSHC.

Other Working Groups

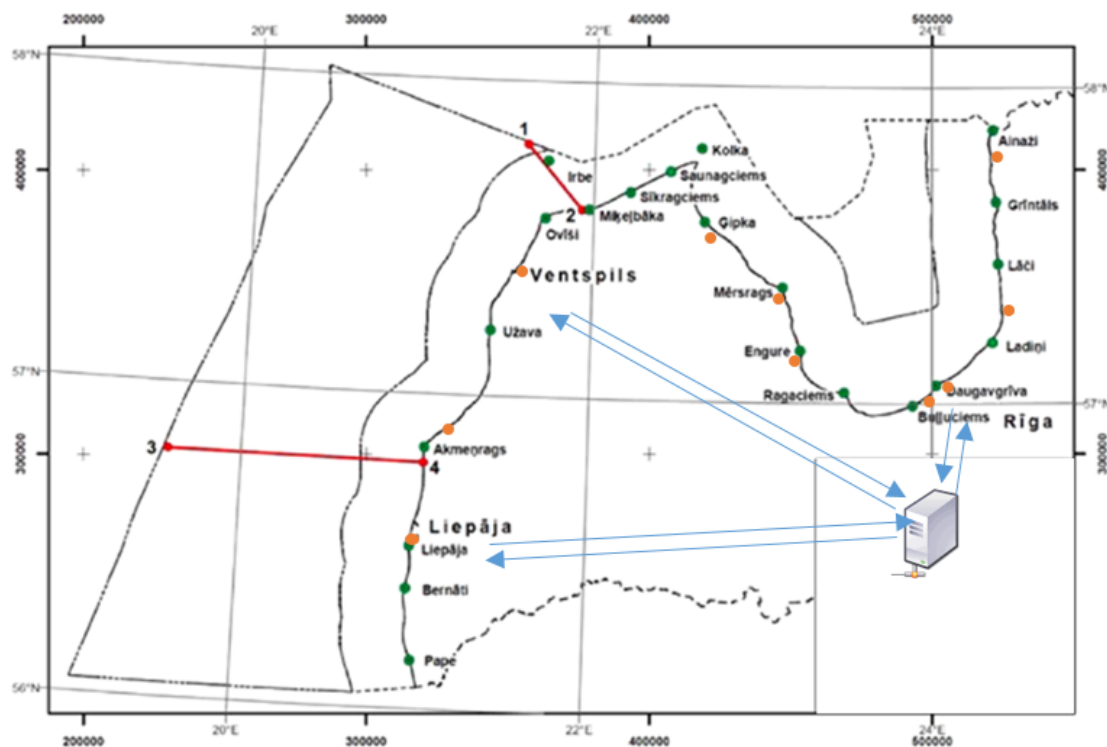
MAL is participating in PRIMAR TEWG.






10. AIDS TO NAVIGATION

Total number of marine aids to navigation (AtoN) in Latvia is ~ 350. Buoyage system in waters of Latvia confirms to IALA Maritime Buoyage System for Region A. All AtoNs within port area are managed by relevant port authority, but outside port area managed area is divided among three major ports (Rīga, Ventspils, Liepāja). National legislation for AtoN is based on international requirements and is in compliance with IALA instruments. Some of the issues covered by national legislation:

- Competency of MAL – to supervise establishment and operation of AtoNs;
- Establishment or discontinuation of AtoN – only with an approval from MAL.
- Requirement to coordinate in advance with MAL any changes in operation of AtoN.
- Technical requirements for AtoNs – defines type, category, color etc.;
- Procedures to ensure operation of AtoN: control and maintenance of AtoNs, including control of shorebased AtoNs from seaward, requirements for spare parts and reserve equipment.
- Obligations of the possessors of AtoN – to ensure continuous operation of AtoN and the compliance of the operational parameters; to report any changes in the operation of AtoN; annually submit maintenance plans and an overview of the execution this plan.

MAL has developed information system for marine AtoNs as well ensures its operation and improvement. Information system contains data of marine AtoNs including monitoring information from those AtoNs that are equipped with relevant equipment.



	Lighthouses/beacons outside port area
	Ports
	Exchange of information (with all ports): <ul style="list-style-type: none"> • Reports on changes of AtoN operation • Establishment of new AtoN • Plans and review of maintenance works • Monitoring information (if AtoN is equipped)
	Managed area by port of Rīga, Ventspils, Liepāja
	MAL and maintained information system of AtoN: <ul style="list-style-type: none"> • Information of all AtoN • Supervision of AtoN • Promulgation of information related to any changes in the operation of AtoN • Check if AtoN are managed according to the set requirements

DETAILED INFORMATION REGARDING HYDROGRAPHIC VESSELS**VESSEL KRISTIĀNS DĀLS**

MMSI	275027000
CALL SIGN	YLAD
HOME PORT	Riga, reg. No. 0123
TWIN - HULL	A1 19.8x6.7x1.3; GT 33t; DWT 9t
ENGINE	2x165kW IVECO, aux.: NANNI DIESEL 4.220 20 kW
SPEED	10 knots
CREW	5
AUTONOMY	3 days
BUILT	2001, FINLAND UUDENKAUPUNGIN TYOVENE OY.
NAVIGATION EQUIPMENT	Furuno FRS 1000 - radar/plotter/sounder , JLR-21 GPS Compass, Furuno VHF FM 8500 - radiotelephone
SURVEY EQUIPMENT	Kongsberg EM 2040P MKII multibeam echo sounder, Seapath 380 positioning, MRU 5 in SB11 Subsea Bottle motion sensor, VALEPORT SWIFT SVP sound velocity profiler, Kongsberg SIS, HYPCK MAX and HYSWEEP software

SURVEY BOAT SONĀRS – model Arronet 23.5 C

MMSI	275041111
CALL SIGN	YL2893
HOME PORT	Riga, reg. No. 3100
MONO - HULL	Al 7.25m x 2.4m x 0.6m
ENGINE	110.3kW YAMAHA F150ATE, aux: Honda 0.9kW
SPEED MAX	29 knots
CREW	2+1 (max 4 pers.)
AUTONOMY	1 day
BUILT	2014, Arronet Teknik AB, Sweden
NAVIGATION EQUIPMENT	FURUNO GP-32 GPS, ICOM-M323 VHF, FURUNO 1715 RADAR, SATELLITE EPIRB ACR RLB-38,
SAFETY EQUIPMENT	ARIMAR inflatable life raft 4 pers., MARINE POOL automatic lifejackets, lifebuoys.
SURVEY EQUIPMENT	Reson SeaBat T20-P multibeam system; positioning system TRIMBLE MPS566; VALEPORT SWIFT SVP sound velocity profiler; SATURN 10 INS motion sensor; Teledyne PDS software.

MOTORBOAT BLESSER 505 WA.

HOME PORT	Riga; reg.Nr.: LV-7323
MONO - HULL	plastic; 5.05m x 2.40m x 0.40m
ENGINE	2 x 50HP Suzuki; aux: Honda 0.9kW
SPEED MAX	16 knots
CREW	2+1
AUTONOMY	1 day
SURVEY EQUIPMENT	Deso Atlas 15 singlebeam; Hemisphere Crescent VS110 GPS compass; South Galaxy G2 GNSS; HYPACK software, VALEPORT SWIFT SVP sound velocity profiler

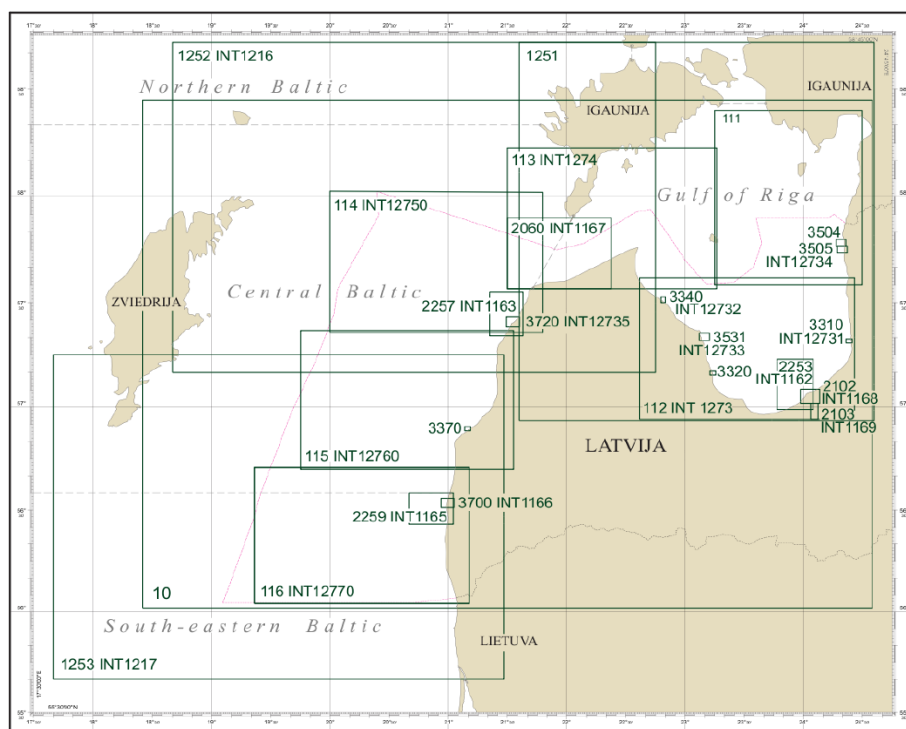
Blue Robotics BlueBoat - Uncrewed Surface Vessel with Cerulean Surveyor 240-16 multibeam

HOME PORT	Riga
HULL	LDPE(Low density polyethylene); 1.20m x 0.93m x 0.46m; weight(no payload) 14,5kg; max.payload 15 kg.
ENGINE	2x M200, Motor is a flooded three-phase brushless motor
SPEED MAX	6 knots
CREW	Uncrewed
ENDURANCE	4 Batteries (1064 Wh, 4.7 kg), 36 hrs (130 km)
SURVEY EQUIPMENT	Cerulean Surveyor 240-16 Multibeam echosounder- 240 kHz, 16-element receive array, wide 80-degree swath, up to 50 meters.

ANNEX 2

PAPER CHART COVERAGE

PAPĪRA KARŠU SHĒMA / PAPER CHARTS OVERVIEW



ENC COVERAGE

